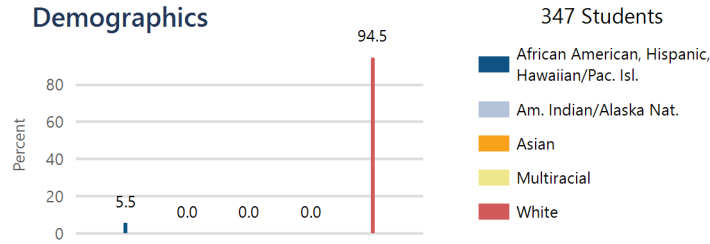




Plainville USD 270

203 SE Cardinal, Plainville, KS 67663
 (785) 434-4678
 www.plainville270.net

System Accreditation Status: **Accredited**
 ESSA Annual Meaningful Differentiation: **Meeting**
 Grades: **PK-12,NG**
 Superintendent: **Lisa Gehring**

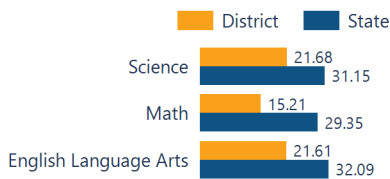


District Kansans Can Star Recognition

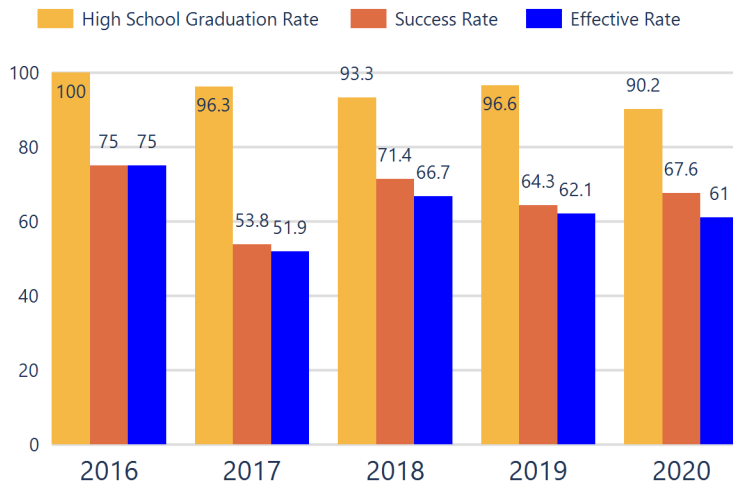
	Gold	Silver	Bronze	Copper
Social-Emotional Growth				
Kindergarten Readiness				
Individual Plan of Study				
Academically Prepared for Postsecondary				
Civic Engagement				
High School Graduation	★			
Postsecondary Success		★		

Academically Prepared for Postsecondary Success

The percentage of students who scored at Levels 3 and 4 on the state assessment.



District Postsecondary Effectiveness



Kansans CAN lead the world!
Graduation
95%
 Effective Rate 70-75%

Five-Year Graduation Avg
94.7%

Five-Year Success Avg
67.1%

Five-Year Effective Avg
63.5%

95% Confidence Interval for the Predicted Effectiveness Rate
43.5 - 51.3%

The numerator and denominator in the Five-Year Averages contain total student counts over five years (2016-2020) and are rounded to the nearest whole number.

- Graduation Rate:** The 4-year adjusted cohort graduation rate is the number of students who graduate in four years with a regular high school diploma divided by the number of students who entered high school as 9th graders four years earlier (adjusting for transfers in and out).
- Success Rate:** A student must meet one of the four following outcomes within two years of High School graduation.
 - Student earned an Industry Recognized Certification while in High School.
 - Student earned a Postsecondary Certificate.
 - Student earned a Postsecondary Degree.
 - Student enrolled in Postsecondary in both the first and second year following High School graduation.
- Effective Rate:** The calculated Graduation Rate multiplied by the calculated Success Rate.

GRADUATION RATE

The four-year adjusted cohort graduation rate is the percentage of students in a cohort, adjusted for transfers into and out of the school, district, or state, who graduate with a regular high school diploma within four years of entering high school.

100.0%

State: **District ESSA Operating Expenditures Per Pupil**

89.3

Expenditures reflect those for the normal day-to-day operation of schools as reported by the Local Education Agency. The following expenditures are excluded: capital outlay, school construction and building improvements, equipment and debt services.

\$15,728

ATTENDANCE RATE

Rate at which students are present at school, not including excused or unexcused absences.

92.0%

State: 92.1

CHRONIC ABSENTEEISM

Percentage of students who miss 10% or more of school days per year either with or without a valid excuse.

25.6%

State: 25.4

[Click here for State Financial Accountability.](#)

DROPOUT RATE

The dropout rate is calculated annually and reflects the number of seventh–twelfth grade students who drop out in any one school year. A dropout is any student who exits school between October 1 and September 30 with a dropout EXIT code AND does not re-enroll in school by September 30.

N/A

State: 1.4



Kansas leads the world in the success of each student.



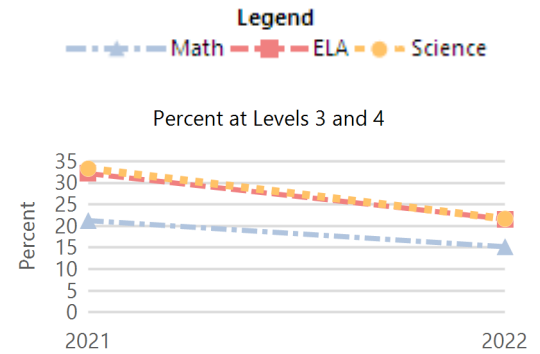
District Academic Success

State Assessment scores are displayed by student subgroup over three years time in three subjects: Math, English Language Arts (ELA), and Science. Assessment scores are not available for the 2020 school year.

Academically Prepared for Postsecondary Success

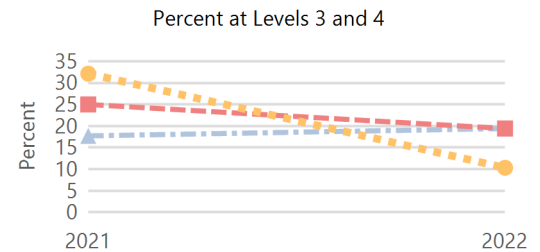
ALL STUDENTS

	2019-20			2020-21			2021-22		
	Math	ELA	Sci	Math	ELA	Sci	Math	ELA	Sci
Level 1	N/A	N/A	N/A	32.75	29.23	41.33	43.47	34.05	45.78
Level 2	N/A	N/A	N/A	45.97	38.59	25.33	41.30	44.32	32.53
Level 3	N/A	N/A	N/A	17.24	25.73	22.66	13.04	19.45	18.07
Level 4	N/A	N/A	N/A	4.02	6.43	10.66	2.17	2.16	3.61



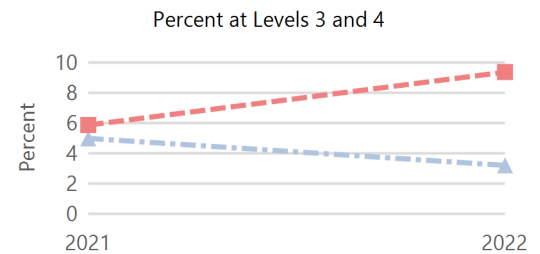
FREE AND REDUCED LUNCH STUDENTS

	2019-20			2020-21			2021-22		
	Math	ELA	Sci	Math	ELA	Sci	Math	ELA	Sci
Level 1	N/A	N/A	N/A	51.61	40.00	46.42	47.22	37.50	62.06
Level 2	N/A	N/A	N/A	30.64	35.00	21.42	33.33	43.05	27.58
Level 3	N/A	N/A	N/A	16.12	20.00	25.00	18.05	16.66	10.34
Level 4	N/A	N/A	N/A	1.61	5.00	7.14	1.38	2.77	0.00



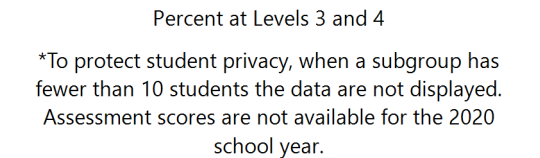
STUDENTS WITH DISABILITIES

	2019-20			2020-21			2021-22		
	Math	ELA	Sci	Math	ELA	Sci	Math	ELA	Sci
Level 1	N/A	N/A	N/A	70.00	82.35	N/A	67.74	56.25	N/A
Level 2	N/A	N/A	N/A	25.00	11.76	N/A	29.03	34.37	N/A
Level 3	N/A	N/A	N/A	5.00	0.00	N/A	0.00	9.37	N/A
Level 4	N/A	N/A	N/A	0.00	5.88	N/A	3.22	0.00	N/A



AFRICAN-AMERICAN STUDENTS

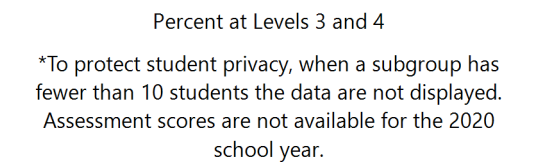
	2019-20			2020-21			2021-22		
	Math	ELA	Sci	Math	ELA	Sci	Math	ELA	Sci
Level 1	N/A	N/A	N/A	N/A	N/A	N/A	N/A	N/A	N/A
Level 2	N/A	N/A	N/A	N/A	N/A	N/A	N/A	N/A	N/A
Level 3	N/A	N/A	N/A	N/A	N/A	N/A	N/A	N/A	N/A
Level 4	N/A	N/A	N/A	N/A	N/A	N/A	N/A	N/A	N/A



*To protect student privacy, when a subgroup has fewer than 10 students the data are not displayed. Assessment scores are not available for the 2020 school year.

HISPANIC STUDENTS

	2019-20			2020-21			2021-22		
	Math	ELA	Sci	Math	ELA	Sci	Math	ELA	Sci
Level 1	N/A	N/A	N/A	N/A	N/A	N/A	N/A	N/A	N/A
Level 2	N/A	N/A	N/A	N/A	N/A	N/A	N/A	N/A	N/A
Level 3	N/A	N/A	N/A	N/A	N/A	N/A	N/A	N/A	N/A
Level 4	N/A	N/A	N/A	N/A	N/A	N/A	N/A	N/A	N/A



*To protect student privacy, when a subgroup has fewer than 10 students the data are not displayed. Assessment scores are not available for the 2020 school year.

N/A: To protect student privacy, when a subgroup has fewer than 10 students, the data are not displayed.

ACT Performance (2022 School Year)

ACT is a national college admissions exam that includes subject level tests in English, Math, Reading and Science. Students receive scores that range from 1 to 36 on each subject and an overall Composite score. This report provides the average Composite score for the 2022 graduating seniors who took the ACT as sophomores, juniors, or seniors.

Note: Not all eligible students completed an ACT.

District	18.3
State	19.8

